

Verosol® EnviroScreen

Metallised 5% openness

Verosol® EnviroScreen Optimum 805 Sunscreen

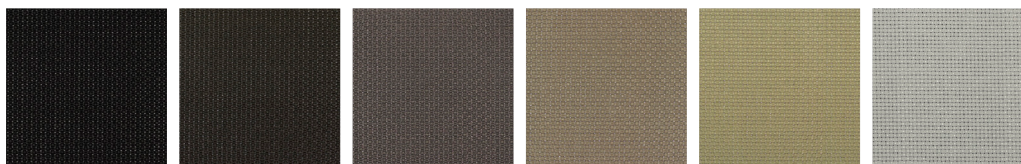
Features

805 EnviroScreen Optimum G2 has a woven screen-like construction, but with a clear textile appearance. Because of the highly reflective metallised backing, the fabric lowers heating and cooling costs substantially, whilst having an excellent view through.

Care Instructions

Verosol fabrics are anti-static and therefore dust repellent. For regular maintenance, use a soft feather duster or vacuum-clean with a soft brush in a low setting.

Colour Options



829

Black

998

Dark Grey

936

Steel Grey

765

Dark Beige

711

Beige

000

Light Grey



green building council australia
MEMBER



Fire retardant
AS1530 part 2

Luxaflex®

Verosol® EnviroScreen Optimum 805 Sunscreen

Technical information

Fabric Density	Semi Transparent
Composition	Inherent FR Polyester, PVC and Formaldehyde free
Weight	250gsm ± 5%
Thickness	0.50 ± 5%
Width	2400mm ± 50mm
Colour Fastness	>5
Flame Retardancy	Independently tested to AS1530 part 2. Flammability index: 0 Range [0-20]
Organic emissions (VOC)	GreenGuard Gold Does not exceed the maximum VOC (Volatile Organic Compound) criteria specified by the Green Building Council of Australia (IEQ-11).
Product Options	Rollershades

Fabric colour code	829	998	936	765	711	000
--------------------	-----	-----	-----	-----	-----	-----

Optical/Light properties

Visual Light Transmittance	3%	3%	4%	5%	5%	5%
UV transmittance	4%	4%	5%	5%	5%	5%
Openness factor (nominal)	5%	5%	5%	5%	5%	5%

Heat/Solar properties

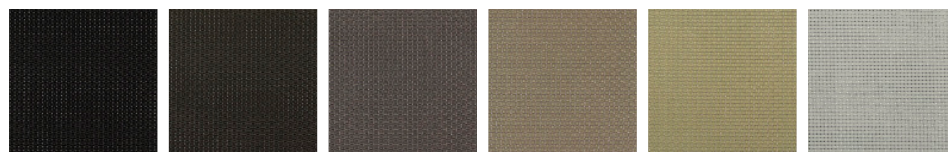
Solar transmittance	6%	6%	6%	7%	7%	7%
Solar reflectance	65%	65%	65%	65%	65%	65%
Solar absorbance	29%	29%	29%	28%	28%	28%

G-value / Solar heat gain coefficient

Glazing Type - Single 4mm Clear Glass	26%	26%	26%	26%	26%	26%
---------------------------------------	-----	-----	-----	-----	-----	-----

For more information please contact New Zealand Window Shades on 0800 223 224 or <http://www.luxaflex.co.nz/contact-us>

Colour Options



829
Black

998
Dark Grey

936
Steel Grey

765
Dark Beige

711
Beige

000
Light Grey

New Zealand Window Shades Ltd.
PO Box 12 785, Penrose, Auckland 1642, New Zealand
Luxaflex® is a division of New Zealand Window Shades Ltd.
©Copyright 2016 New Zealand Window Shades Ltd.

December 2016



green building council australia
MEMBER



Fire retardant
AS1530 part 2

Luxaflex®